



WMMG-7-27

Supports MiMo & diversity across 2G / 3G / 4G
Two wideband elements with gain
Durable wall mount housing
Suitable for mast, wall and desk mounting

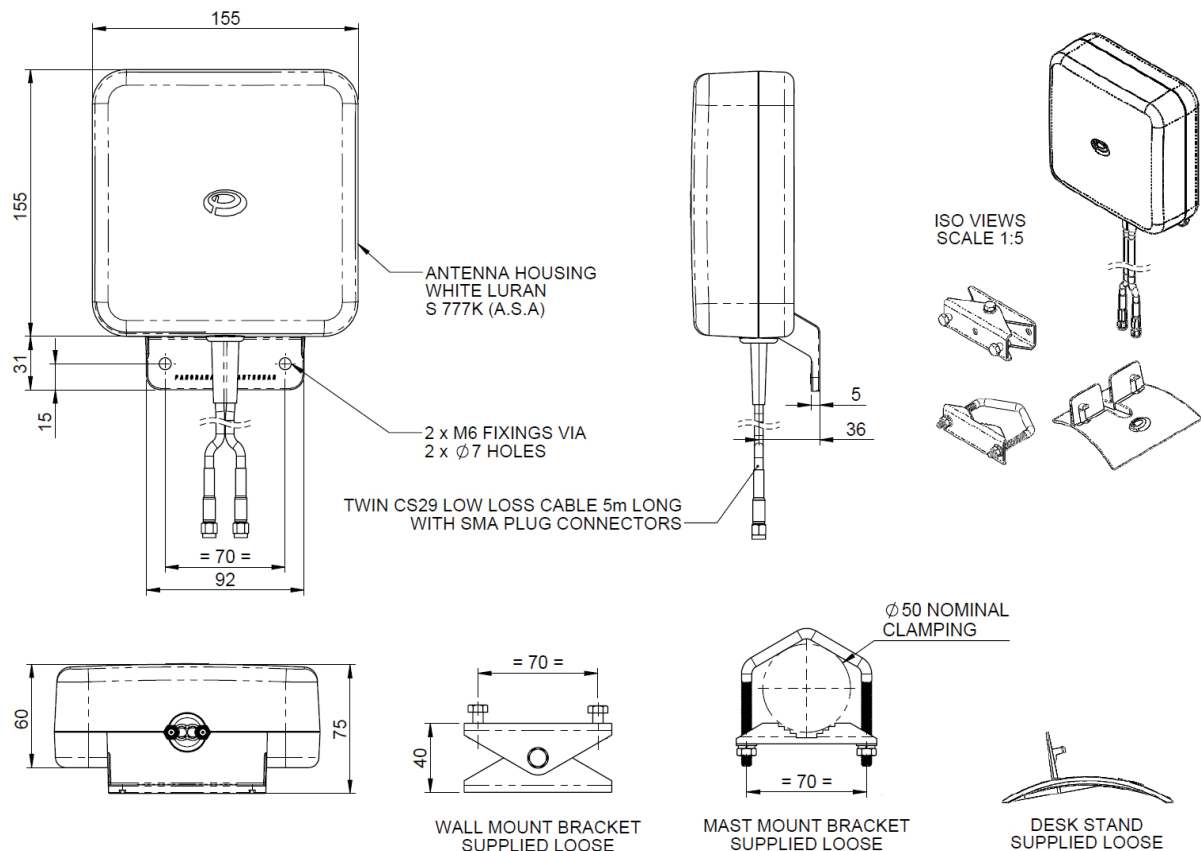
The WMMG antenna provides an innovative and future proof solution for 2G / 3G and 4G networks. Incorporating two separately fed ultra wideband elements in a single housing the WMMG is equipped to provide client side MiMo and diversity support for the networks of today and tomorrow. With 2dBi gain at 698-960MHz, 5dBi gain at 1710-2170MHz and 4dBi gain at 2.2-2.7GHz the WMMG provides extra gain performance where it is needed most.

The rugged, weatherproof housing is designed for wall mounting. Wall and mast mount brackets are provided.

5 metres of fitted low loss double shielded twin cable minimises exposed connector joints and simplifies cable management for easy installation.

The WMMG is a cost effective value added product for network operators and service providers ensuring a stable link with improved data rates for subscribers thereby improving satisfaction and retention.

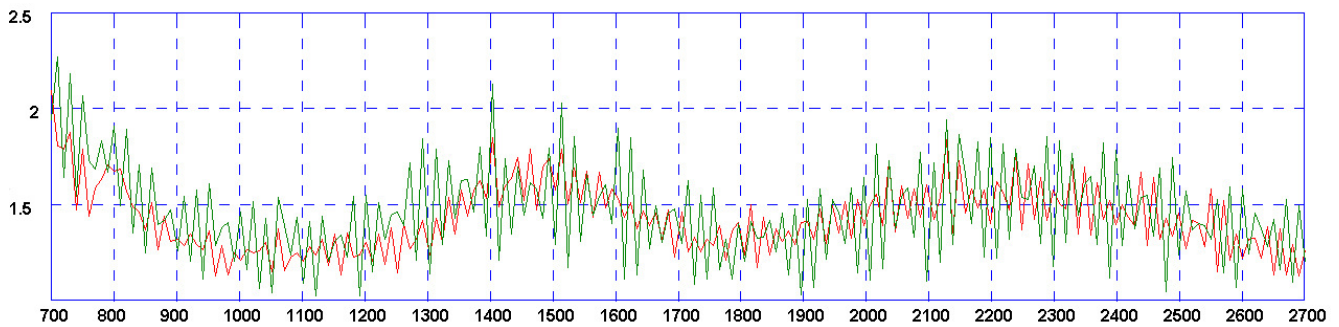
Technical Drawing



Cellular / LTE

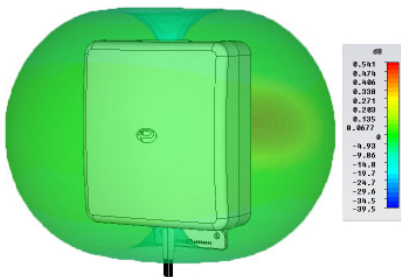
Wall Mount Gain MiMo Antenna

Typical VSWR Elements 1 & 2 *

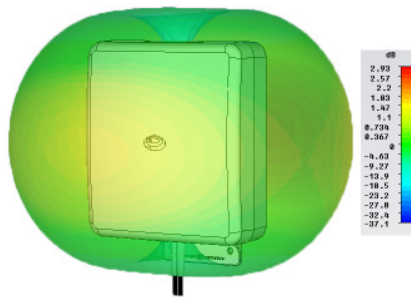


*VSWR Measured with 5m of CS29 cable

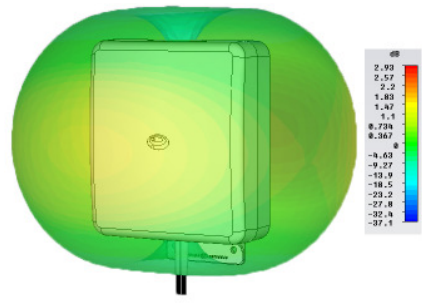
3D Gain Plot (750MHz)



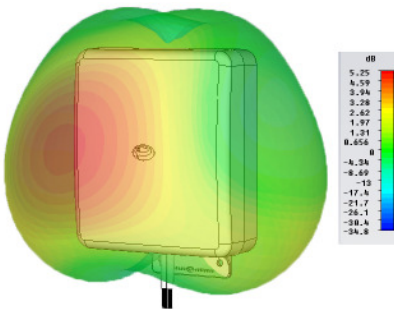
3D Gain Plot (850MHz)



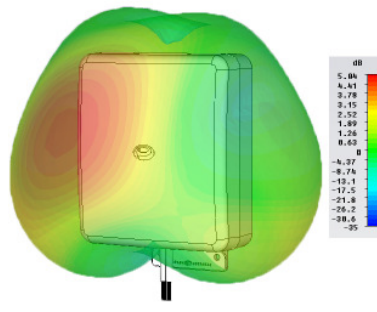
3D Gain Plot (950MHz)



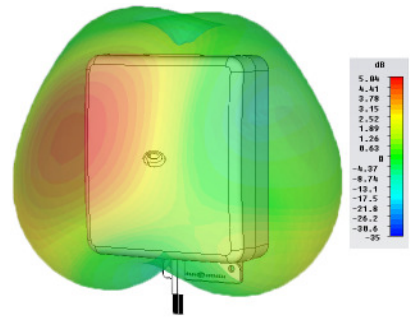
3D Gain Plot (1800MHz)



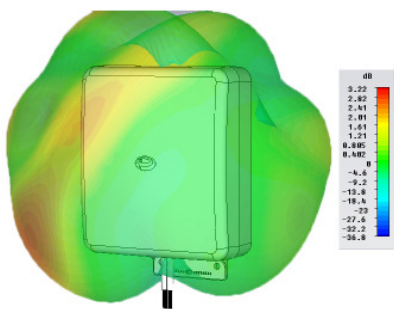
3D Gain Plot (1900MHz)



3D Gain Plot (2100MHz)



3D Gain Plot (2600MHz)



*3D plots simulated in CST Microwave Studio without additional cable loss

Cellular / LTE

Wall mount Gain MiMo Antenna

Part No.		
WMMG-7-27-5SP		
Electrical Data		
Frequency Range (MHz)	Antenna 1	698-960 / 1710-2700
	Antenna 2	698-960 / 1710-2700
Operational bands		2G / 3G / 4G
Radiation pattern		Hybrid
VSWR		< 2:1
Peak Gain (excluding cable loss)	698-960MHz	2dBi
	1710-2170 MHz	5dBi
	2.2-2.7 GHz	4dBi
Efficiency - excluding cable loss (all bands)		> 50%
Correlation co-efficient (all bands)		< 0.2
Element isolation		> 20dB
Max input power (W)		20 Watts
Impedance		50Ω
Mechanical Data		
Dimensions (mm)	Height	155 (6.1")
	Width	155 (6.1")
Operating temp (°C)		-30° / +80°C (-22° / 176°F)
Material		ASA
Colour		RAL9010 (Pure White)
Weight (g)		1100
Mounting Data		
Fixing		Wall mount / mast mount / desk mount
Mounting bracket material		Stainless steel / Aluminium
Pole diameter (mm)		20-50 / (0.78 - 1.96")
Cable Data		
Type		2 x CS29 Coax
Diameter (mm)		5 (0.2")
Length (m)		5 (16')
Termination		2 × SMA (m)

Panorama Antennas Ltd
Frogmore, London, SW18 1HF, United Kingdom

T: +44 (0)20 8877 4444
F: +44 (0)20 8877 4477

E: sales@panorama-antennas.com
www.panorama-antennas.com

Waiver: The data given above is indicative of the performance of the product/s under particular conditions and does not imply a guarantee of performance. These specifications are subject to change without notice.

Copyright © Panorama Antennas Ltd. All rights reserved.